



Universität
Basel

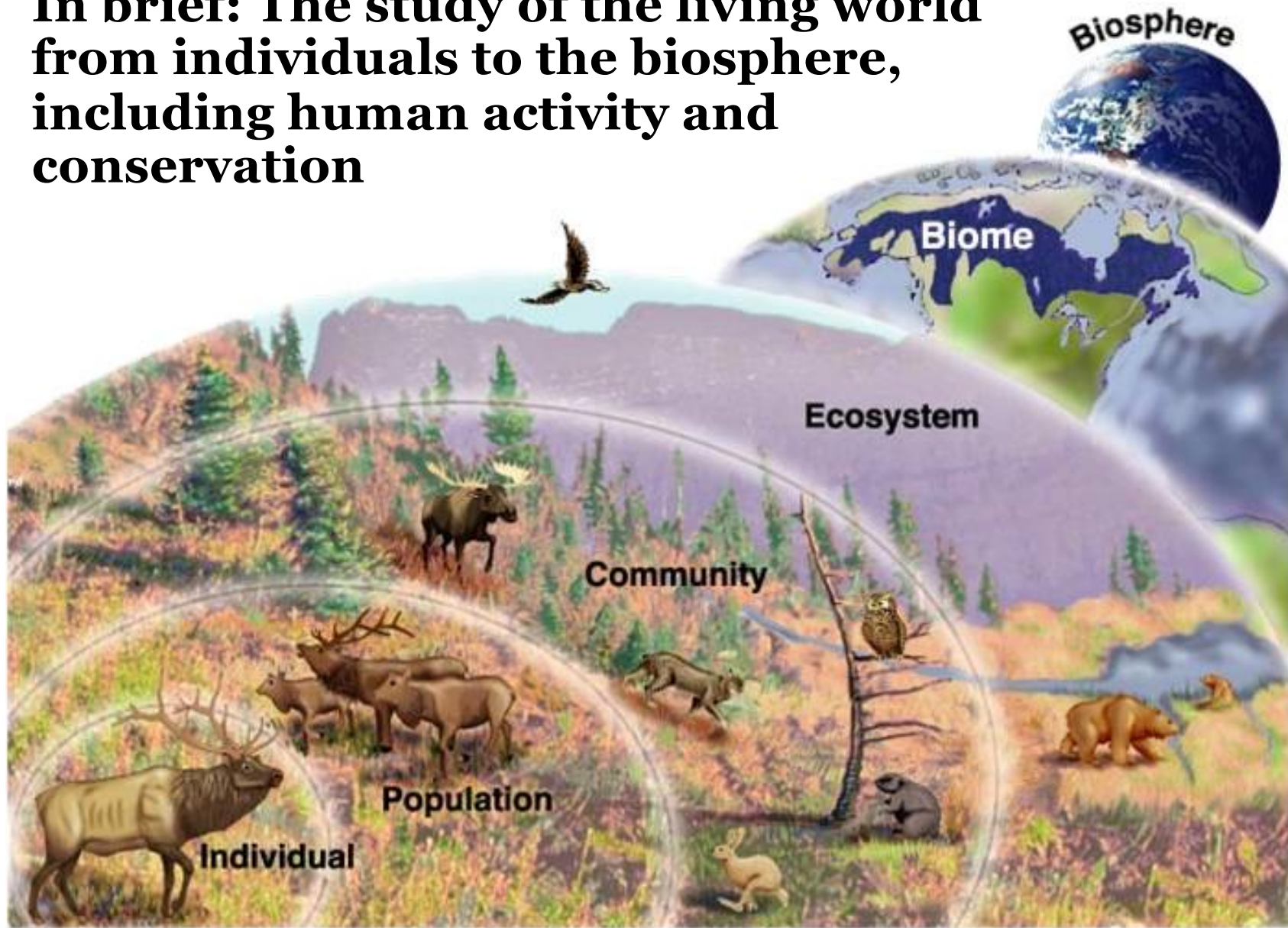
Departement
Umweltwissenschaften



MSc Ecology

Master's degree program at the Department of
Environmental Sciences

In brief: The study of the living world from individuals to the biosphere, including human activity and conservation



<https://vdinh.weebly.com>

In brief

- Course modules cover a wide spectrum of plant and animal ecology, ecosystem science and conservation biology
- Students deepen their knowledge in the fields of ecology and conservation biology by conducting research in their area of specialization
- Direct admission with a Bachelor of Science (BSc) in Biology from the University of Basel. Other Swiss or foreign degrees from an education institution recognized by the University of Basel require approval by the examination commission of the Faculty of Science.

The Master emphasizes - among others - field work



Why choose a MSc in Ecology in Basel?

- Excellence in population biology, biodiversity and conservation as well as global change research
- The research labs involved in the Master's degree program offer collaborations with institutions practicing applied ecology and conservation management
- We offer a broad spectrum of course modules from which you choose your preferred topics including attractive field courses in Switzerland and abroad
- We employ modern laboratory methods, including molecular techniques
- We emphasize theory based and experimental approaches

Study structure

- Duration: 3 to 4 semesters
- Credits: 90 ECTS (50 CP for Master's thesis, 10 CP for Master's examination, 30 CP for in-depth professional studies)
- Language: English
- Start of program: fall or spring semester
- Application dead line: 30 April (for fall semester) or 30 November (for spring semester)

Our philosophy

- No matter what career path you choose in biology, the MSc Ecology will equip you with skills for evaluating complex interactions among ecological factors, statistical/probabilistic thinking, and creating sustainable solutions to environmental problems.



<https://www.nature.com/news>

Career opportunities

- Getting a PhD
- Applied conservation, applied ecology, resource management (WSL, EAWAG, Fibl, CABI, NGOs, cantons, federal government, private environment agencies)
- Sustainable development (NGOs, cantons, federal government, private agencies)
- Medicine, biotechnology and pharmaceutical industries
- Teaching (high school, higher education, conservation agencies)
- The practical advantages of the subject are found not only in basic research but also, increasingly, in business, society and politics

Further information

Visit our websites:

- Student Office Biology
- Plant Ecology and Evolution group (also: <https://duw.unibas.ch/de/master-ecoevo/>)
- Ecology group (also: <https://eco.duw.unibas.ch/en/teaching/>)
- Information flyer

Contact the programm coordinators per mail:

- Prof. Dr. Yvonne Willi: yvonne.willi@unibas.ch
- Prof. Dr. Sabine Rumpf: sabine.rumpf@unibas.ch

Thesis topics research group Ecology

Arctic and alpine ecology: Are tourists shaping the response of plant species' to climate warming? How are biotic interactions influencing the greening of the Arctic?



Global change ecology: How has species' phenology, diversity and distribution changed during the Anthropocene?



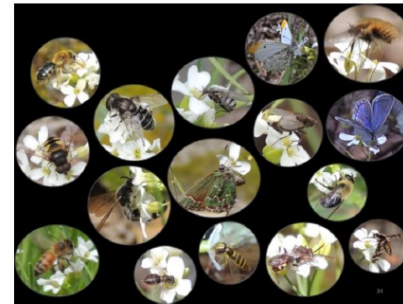
Non-native species: Are non-native plant species spreading along roads and trails in the Swiss National Park? Are there temporal invasion patterns in mountains globally?



Prof. Rumpf

Thesis topics in Interactions & Climate change impact

Plant-pollinators: Interaction crisis related to global change

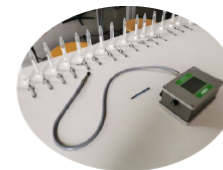


Gruppe Prof. Willi

Living in thin air: Why do plants fail to adapt to warming conditions?



Conservation & assisted gene flow: Can plants be rescued by interpopulation outcrossing?



Eucor – The European Campus



Tri-National **Plant Sciences** Master Program TREE

Ausgangslage

- Ergänzendes Lehrangebot an 5 Universitäten
- Forschungsorientierter Unterricht
- Regionale Forschungszusammenarbeit

Partner

- Universität Basel
- Albert-Ludwigs-Universität Freiburg
- Université de Strasbourg
- Université de Haute-Alsace
- Karlsruher Institut für Technologie

