

Swiss TPH



Swiss Tropical and Public Health Institute
Schweizerisches Tropen- und Public Health-Institut
Institut Tropical et de Santé Publique Suisse

Assoziiertes Institut der Universität Basel

From the
Swiss Tropical Institute Field laboratory
to the
Ifakara Health Institute

Marcel Tanner

Swiss Tropical and Public Health Institute
(www.swisstph.ch)

University of Basel, 19 February 2014



**From 1949 – today:
Partnership in research, training/capacity building – service provision
Mutual learning for change!**











Mission Statement

To develop and sustain a district based health research and resource centre capable of generating new knowledge and relevant information for public health policy and actions.

SITUATION OF STIFL 1981

APPLIED
FIELD
RESEARCH

STIFL –Core
INFRASTRUCTURE
EQUIPMENT
MAINTENANCE
LOGISTICS AND
ADMINISTRATION

TEACHING
MATC

Partners

SFDDH

NIMR

DHO

MoH

Funds

SDC

STI

RGF



Ifaka
Centre

CONTROL OF
COMMUNICABLE

HEALTH
SYSTEMS

Steering Commitee

MoH

STI

DHO

SDC

NIMR

DONORS

- 1981: Tanzanian Centre
- 1988: MoH Evaluation
- 1990: SDC Evaluation
- 1994: 1st TZ Director
- 1996 IHRDCTrust

Fun

SDC

ODA

TDR

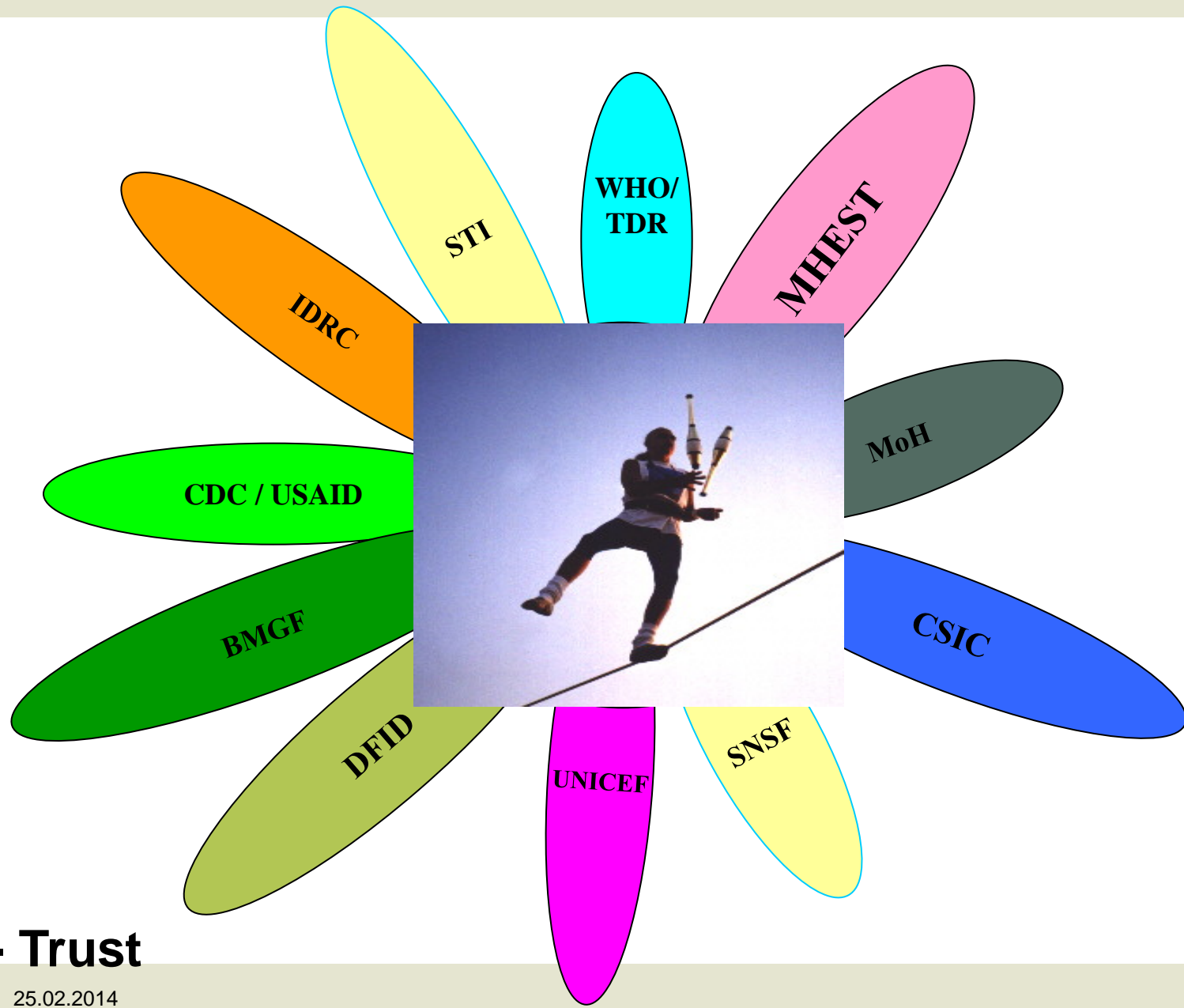
STI

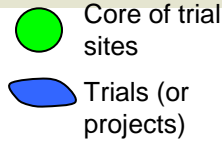
DGIS

CONTINUING
EDUCATION
TRAINING
SUPERVISION

SUPPORT DHO/
RHO IN PHC
IMPLEMENTATION &
MANAGEMENT



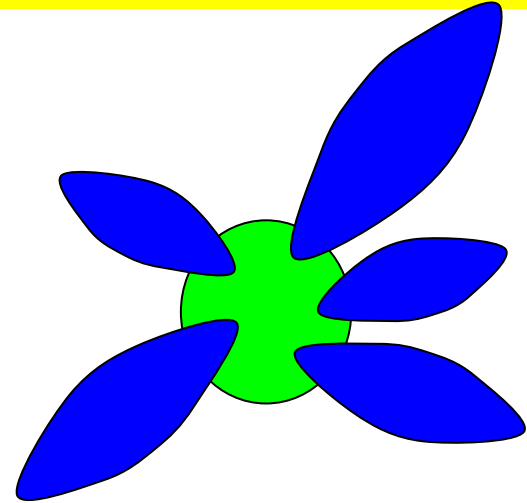
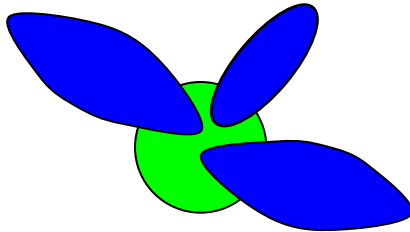
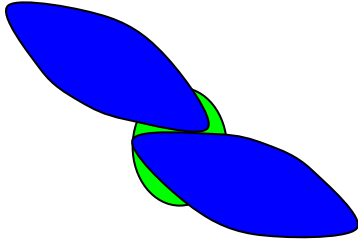




...to a research center

...to a project site...

FROM a trial site...



What is the Core?

- Informal alliance of trials
- Managed provider of some infrastructure to trials

- Separate independent entity that provides trial infrastructure

Core Funding

- Resources from projects fund the core
- Has built small amount of core - funding and resources

- Funding for core not dependent on projects

Trials/Projects

- Small number of projects that are 90% of the core
- Small number of projects but able to add different disease or intervention

- Different interventions and/or different diseases

Time Focus

- Year to year
- 3-5 years horizon

- At least 10 year horizon

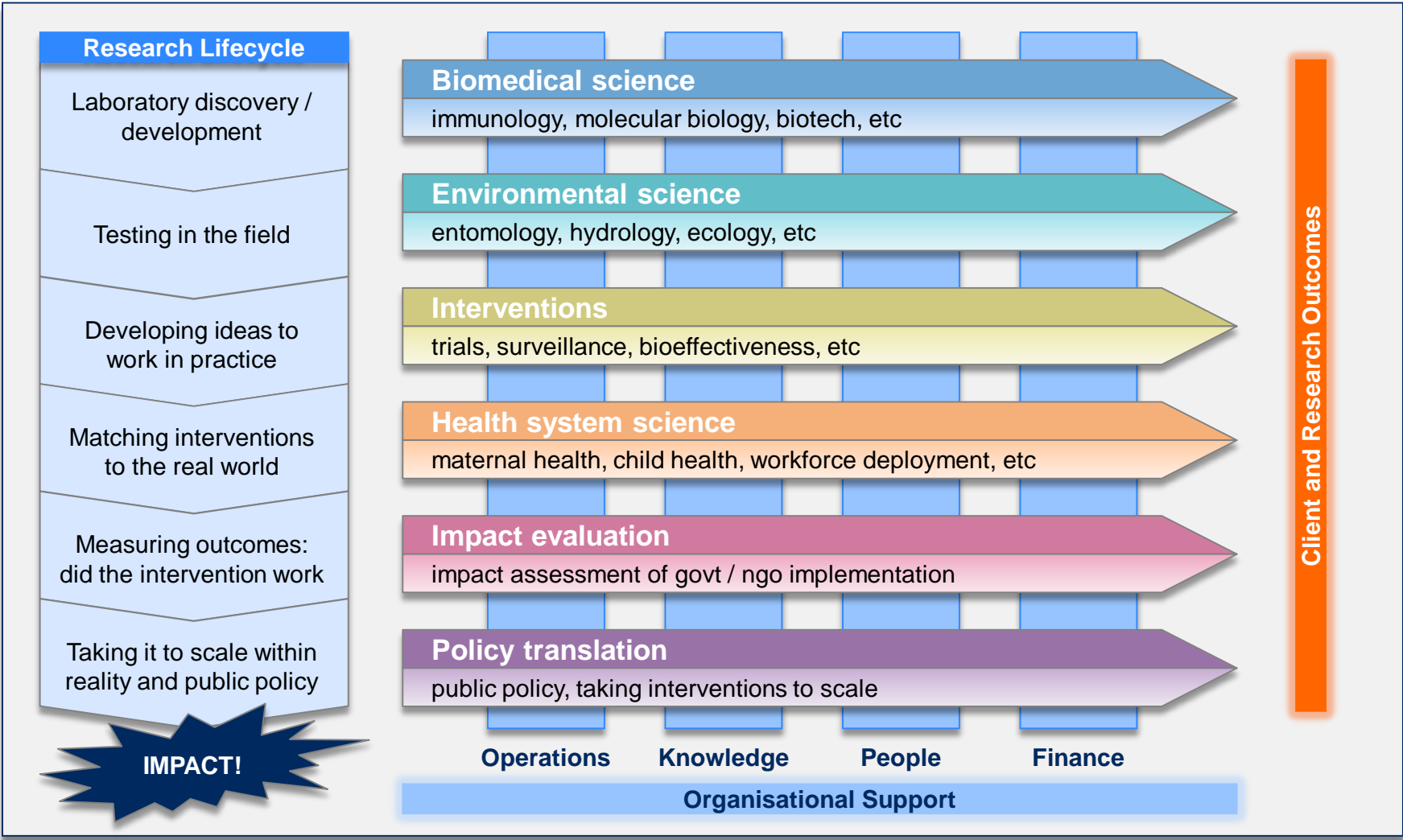
Infrastructure

- Very basic-dependent on project funding
- Decent infrastructure that survives the loss of a single trial / project

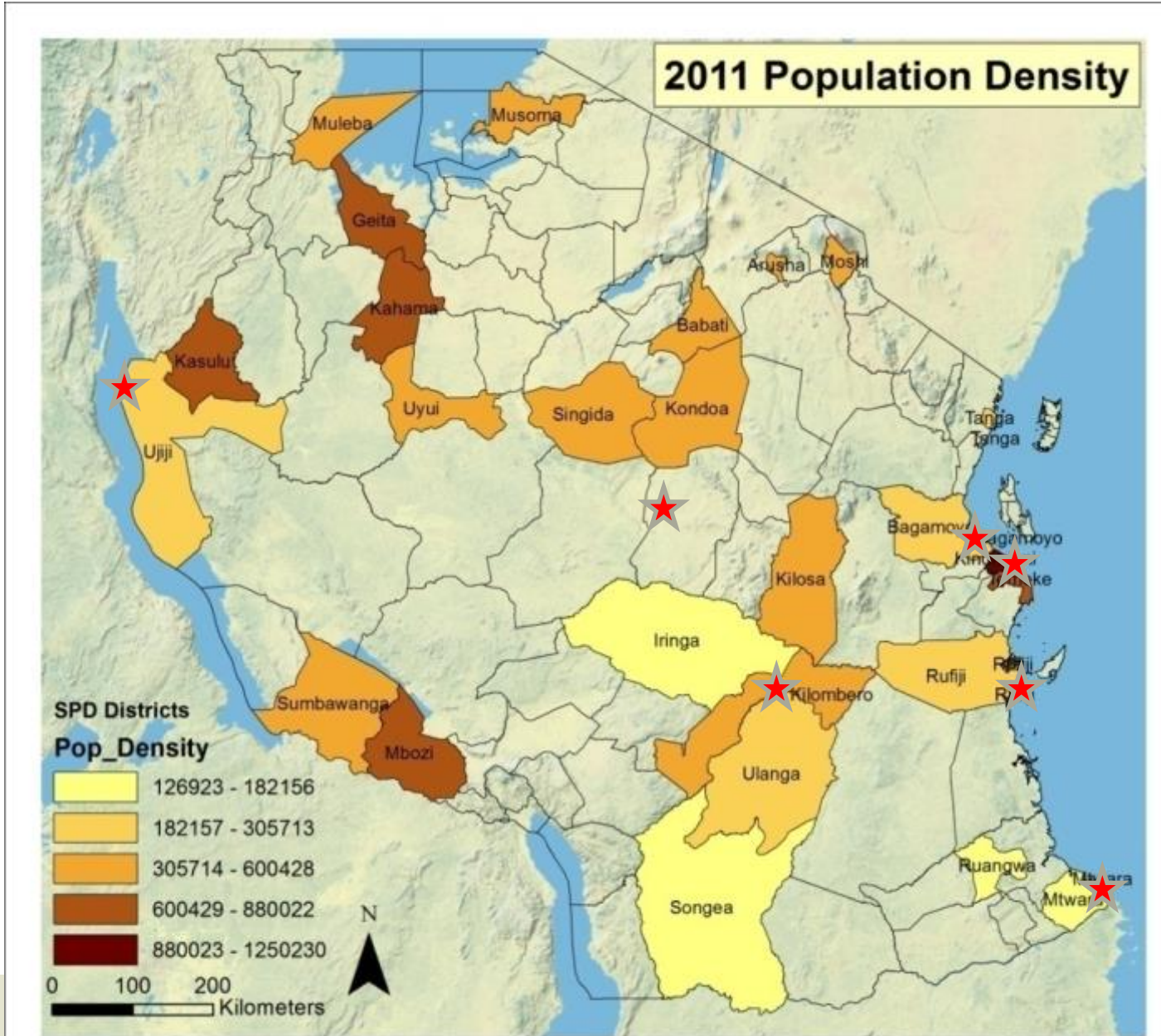
- Full infrastructure maintained over time by core with projects paying fair share

Research thematic groups: approx 65 projects

Swiss TPH



IHI Branches and Sentinel Panel of Districts



Excellent Research Infrastructure



I
N
S
I
S
T

I
M
P
A
C
T

S
U
R
V
E
Y

Completed 2013

200,000 households

4 platoons

20 survey teams

20 supervisors

20 mappers

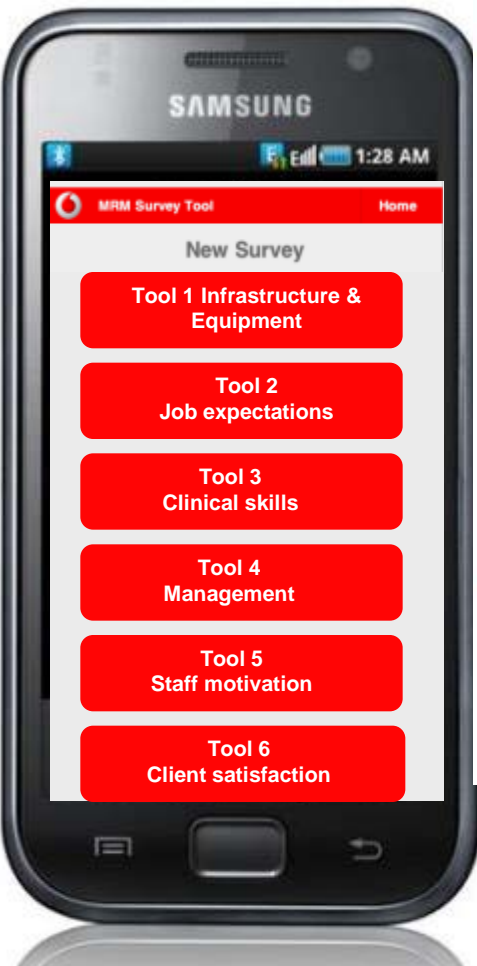
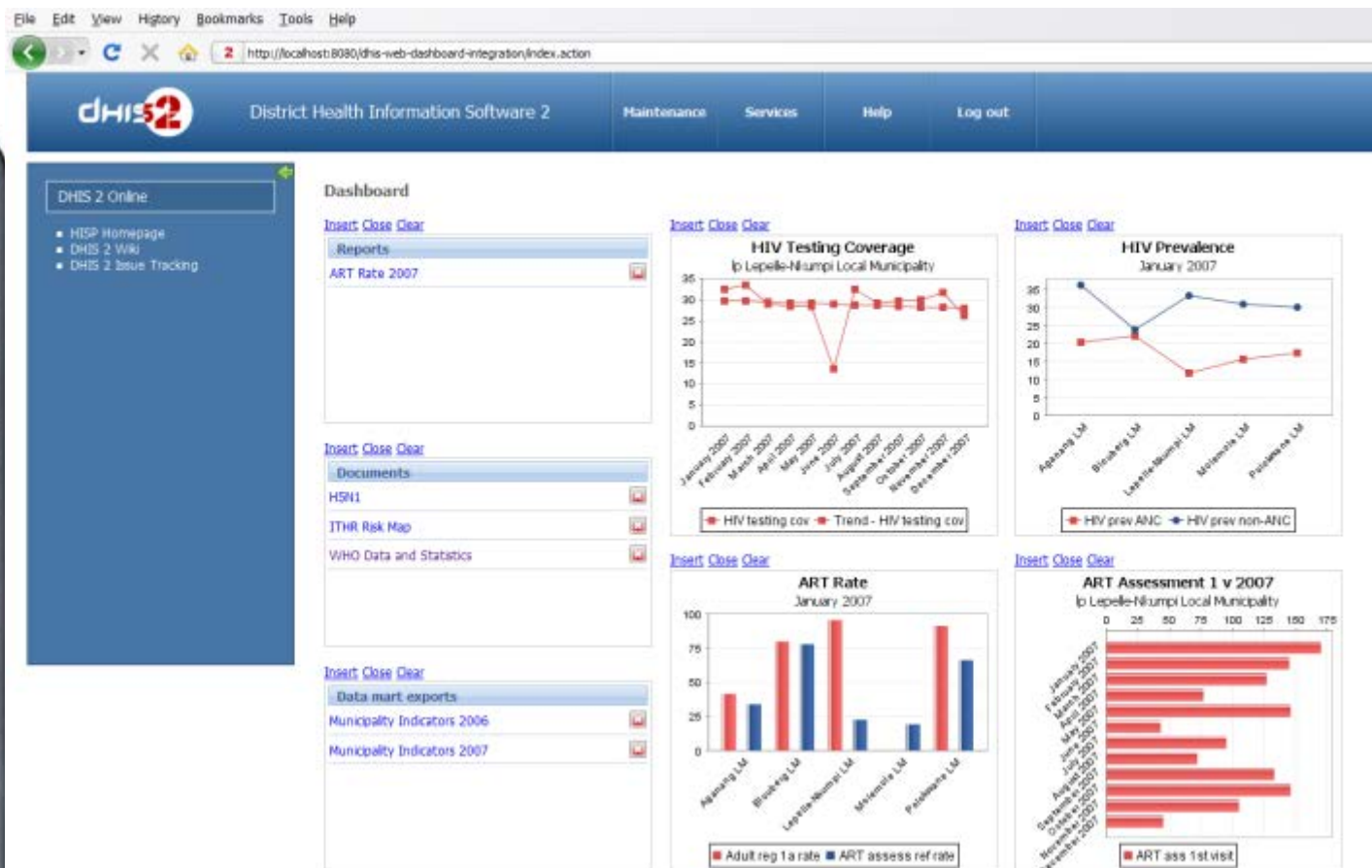
140 interviewers

2 buses + 16 4WD



Health facility assessment & health information system

Swiss TPH





Human Resources

Total payroll	1,073	1,055
Total temporary	209	44
Total IHI employed	1,282	1,099
Collaborators	55	56
Total personnel	1,337	1,155

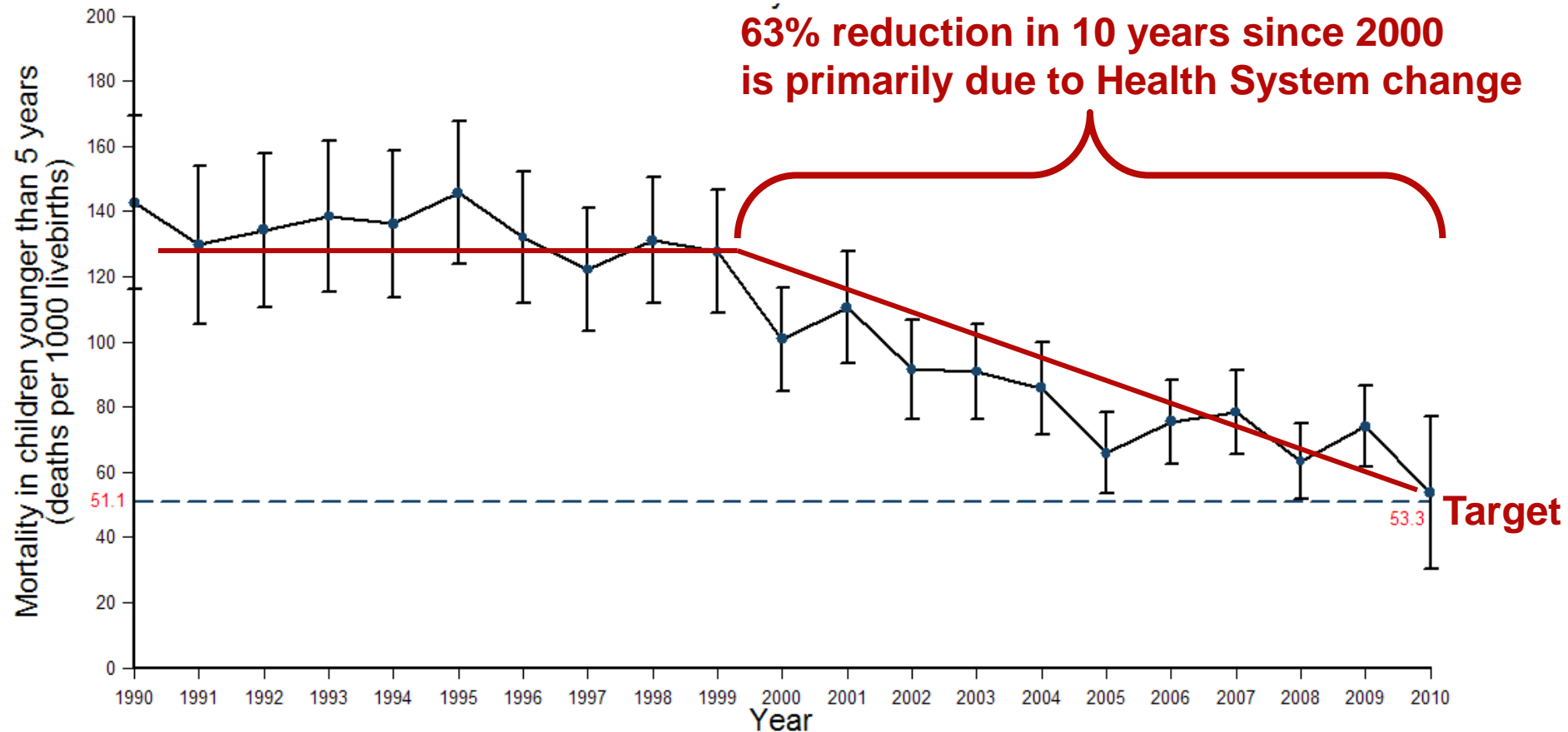


Some achievements of IHI through partnership

- Effectiveness evaluation of ITN demonstrated 27% reduction of child mortality, 60% reduction of malaria and anemia and forms a basis of National scaling up of ITNs – NatNets (with core Swiss support) and IHI experiences of Voucher scheme results into national scheme funded by Global Fund
- Contributed to the formulation of malaria treatment guidelines in the country
- Undertook pivotal trials for malaria vaccines and test for Coartem infant formulation
- Contributed with preventive strategies (IPTi) against malaria for infants
- Confirmed IMCI strategy that improves cost-effectively child survival by 13% and strategy now part of *MKUKUTA* and integrated in CCHP
- Confirmed the first biological control of *Anopheles* mosquitoes in the field
- Established resource centre for health development for government, NGOs, donors
- Biomedical and social scientists and public health practitioners have received financial support for MSc, PhD and post graduate training – mainly at STI, Basel
 - > 50 PhD and ... still on PhD training (15 at STI)
 - > 40 MSc and > 30 postgrad MIH/MPH
 - and received equal numbers from abroad to be trained
- Regular mid-term strategic plans established and translated into action
- Diversified sources of funding
- Direct government of TZ contributions is increasing
- 80% of the core costs covered by internal generated income

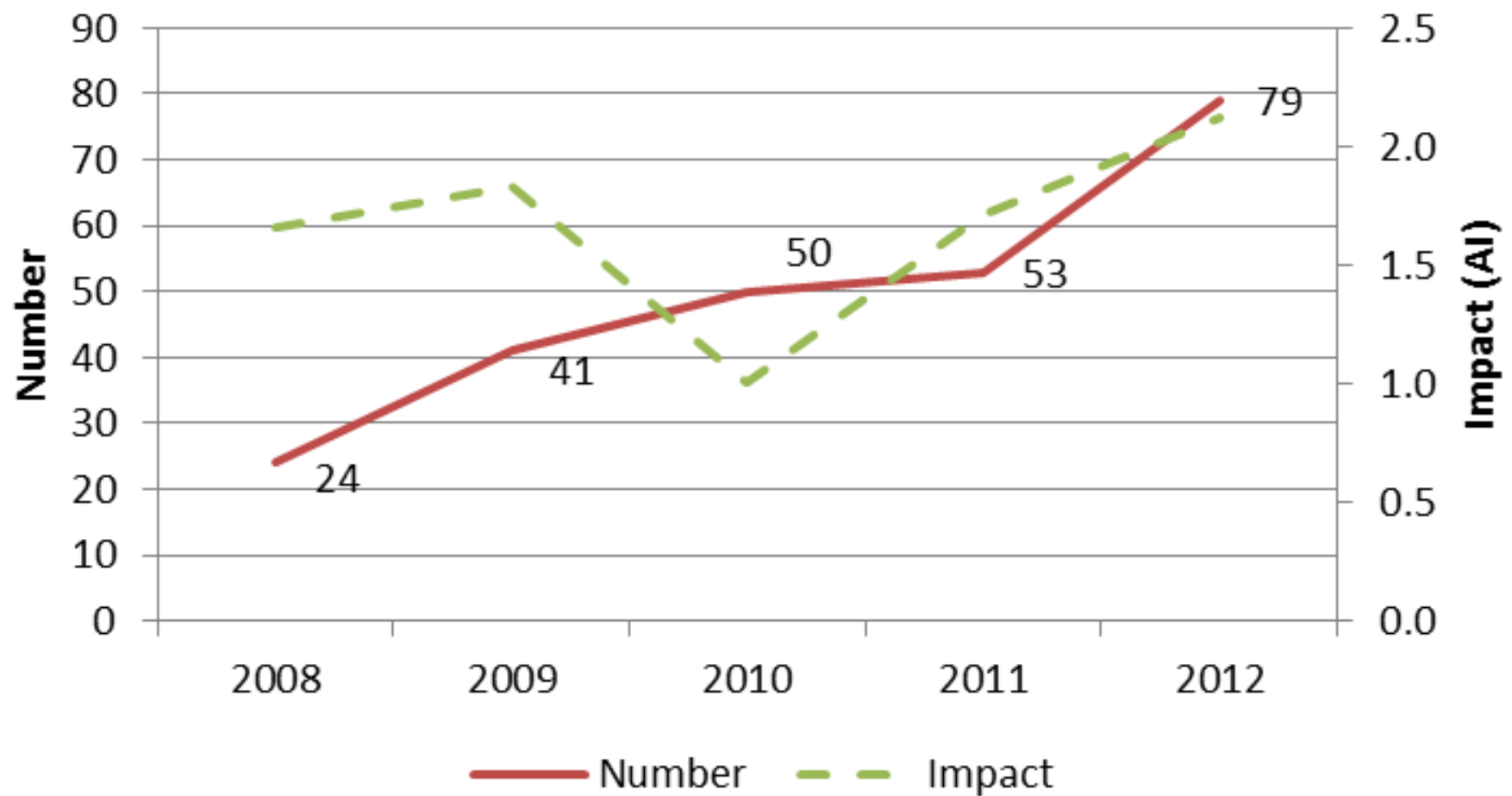


And why was it rapidly scalable at national level?





Publication Volume and Impact 2008-2012



Asanteni sana, tena sana...

...na bila shaka ushrikiano utaendela

...for the mutual learning for change!